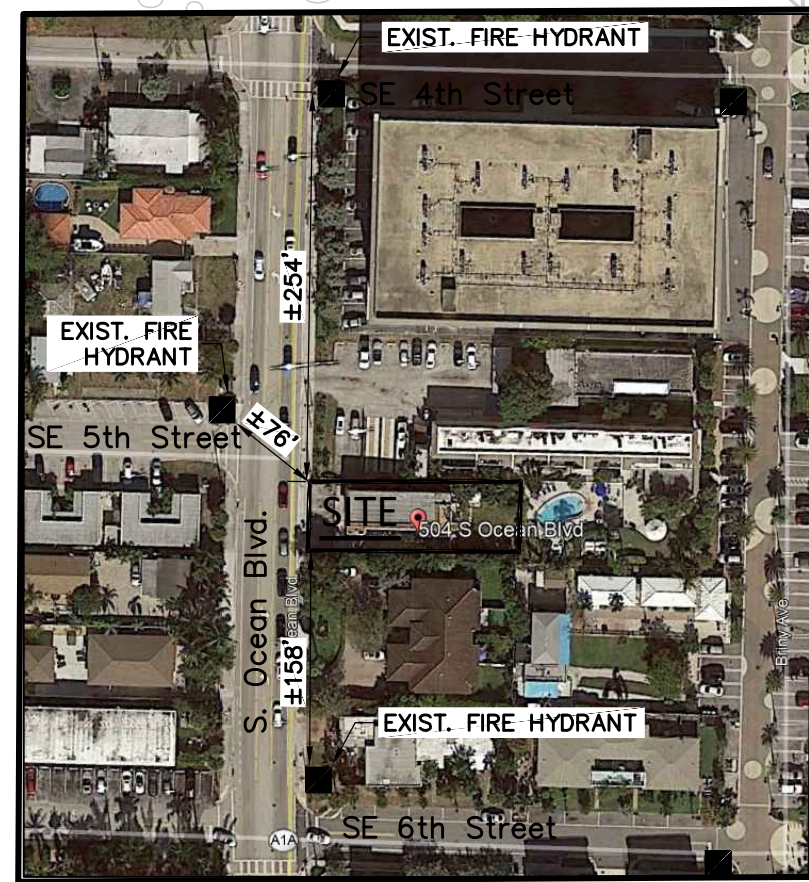
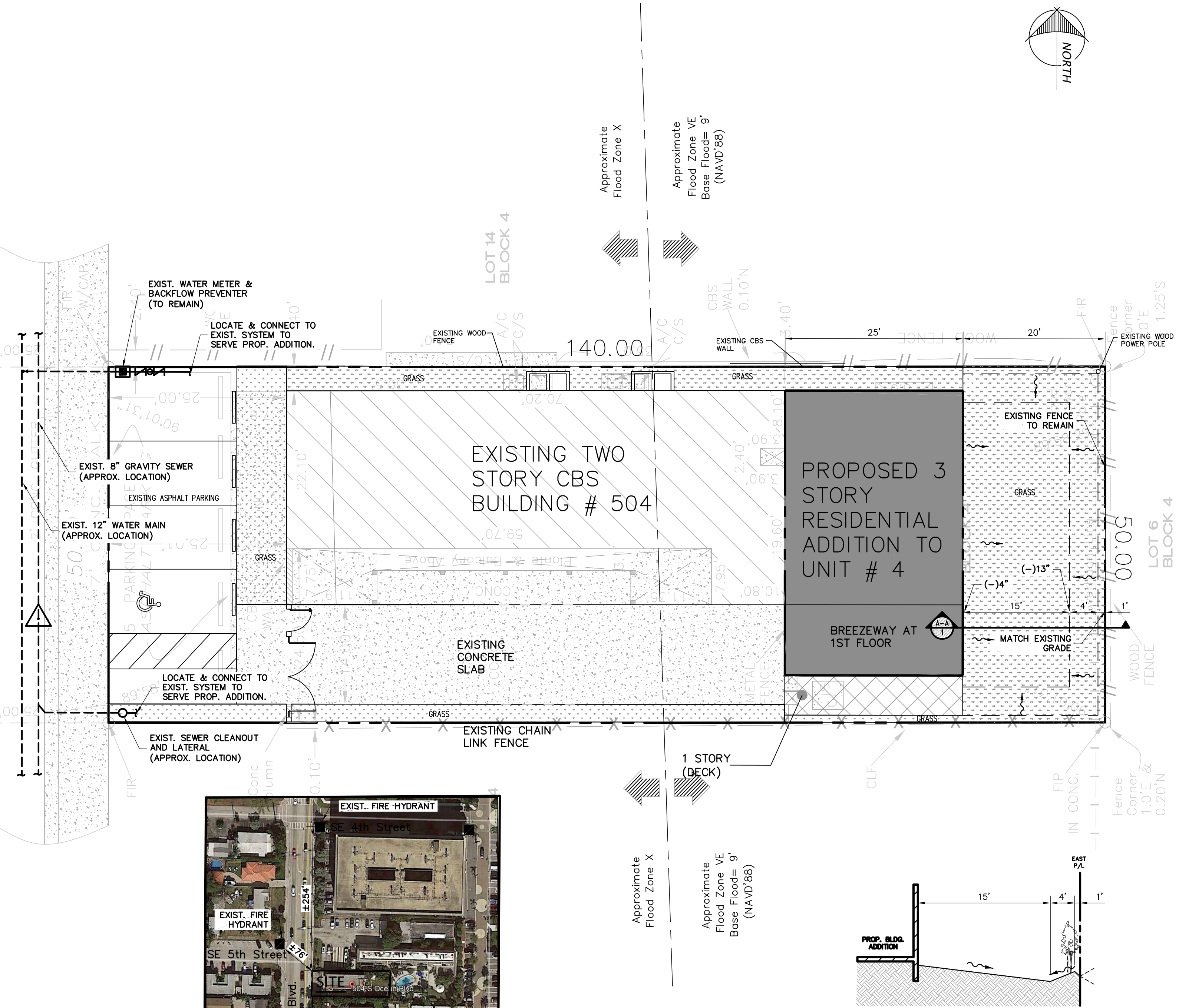
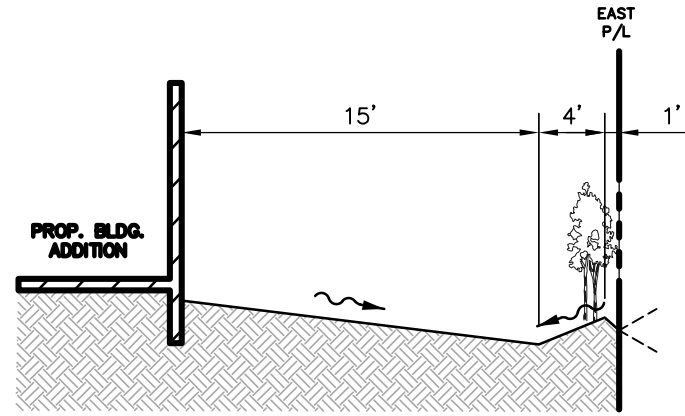


OCEAN BOULEVARD
STATE ROAD No. A-1-A

50.0' RIGHT OF WAY PER PLAT
40.0' ASPHALT ROAD



FIRE HYDRANT LOCATION EXHIBIT
SCALE = NTS



SECTION A-A
SCALE = NTS

DRC
PZ21-12000018
9/15/2021

USMAN - 504 S. OCEAN BLVD.
SURFACE WATER MANAGEMENT CALCULATIONS

HORIZONTAL SURFACE LAND USE BREAKDOWN		
LAND USE	AREA	PERCENT
EX BUILDING	0.04	24%
EX PAVEMENT	0.06	38%
EX GREEN	0.06	38%
TOTAL	0.16	100%
AFFECTED AREA		
PROP. BUILDING	0.024	51%
GREEN	0.023	49%
TOTAL	0.047	100%

Water Quality Calculations:

Water Quality Required

A. Compute the first inch of runoff from the entire site.

= 1 inch x Total Area x (1 ft / 12 in)
= 0.004 ac-ft (CONTROLS)

B. Compute 2.5 inches times the percentage of imperviousness.

a. Site Area (SA), for water quality pervious/impervious calculations only

SA = Total Area - (Roof)
= 0.023 Acres

b. Impervious Area (IA), for water quality pervious/impervious calculations only

IA = Site Area(SA) - Pervious Area
= 0.000 Acres

c. Percentage of imperviousness for water quality

%imp = (IA / SA) x 100%
= 0.000 %

d. For 2.5 inches times percentage of imperviousness

= 2.5 inches x %imp
= 0.000 inches

e. Compute volume required for quality detention

= inches to be treated x (total site - lake) x (1 ft / 12 in)
= 0.000 ac-ft

C. Since the first inch of runoff over the entire site is greater than 2.5 inches times the percentage of impervious, the volume to be treated is:

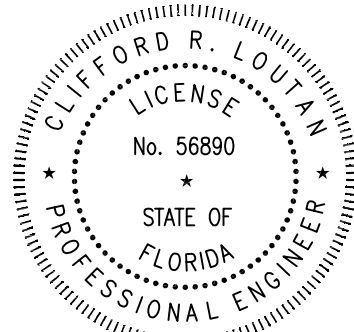
Volume to be treated = ac-ft Cubic feet (C.F.)
0.004 171 (required)

Water Quality Provided

A. Dry retention area storage (Provided)

Area	L (ft)	W (ft)	D (ft)	Volume (c.f.)
	15	40	0.75	225

VOLUME PROVIDED = 225 C.F.



Date: August 13, 2021

This item has been digitally signed and sealed by CLIFFORD R. LOUTAN, P.E. on the date adjacent to the seal. Printed copies of this document are not considered signed and sealed and the signature must be verified on any electronic copies.

Clifford R Loutan
Digitally signed by Clifford R Loutan
Date: 2021.08.16 17:02:54 -0400

4577 Nob Hill Road, Suite 102
Sunrise, FL 33351
www.suntecheng.com
Certificate of Auth. #700718-7019
Phone (954) 777-3123
Fax (954) 777-3114

Sun-Tech
Engineering, Inc.
Engineers • Planners • Surveyors



REVISIONS BY

PROPERTY OWNER:
ANAM USMAN
PROPERTY ADDRESS:
504 SOUTH OCEAN BLVD
POMPANO BEACH FL

TITLE SHEET
ENGINEERING PLAN

ARCHITECT:
LUIS URIARTE
Florida Architect License # AR 94107
18100 ATLANTIC BOULEVARD PHONE
786 290 9807 Email: invusa@live.com

DRAWN BY:
LUIS URIARTE
DATE: **04.06.2021**
SCALE: **AS NOTED**
PROJECT:

SHEET
001
OF PAGES